

Stopcock Valves are precision machined devices that function in much the same way as a ball valve. When the handle points in the direction of flow, the valve is fully open; when the handle points perpendicular to the direction of flow, the valve is fully closed; and at the 45° position the valve is halfway open and thereby has a metering effect on the media flow.



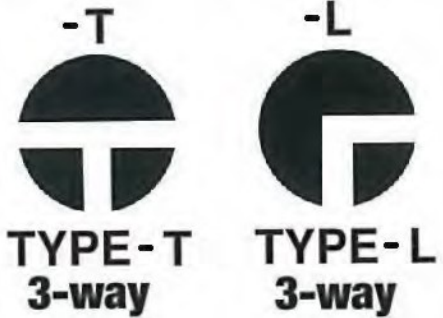
The iPolymer Stopcock features an all PTFE wetted surface design. The design is ideally suited for harsh chemical and corrosive media and environments. Polytetrafluoroethylene (PTFE), commonly known by its popular E.I. DuPont trade name TEFLON®, is also well suited to clean room and deionized water applications.

The body, stem and ports are constructed from PTFE. For standard applications, external non wetted components are constructed from Polypropylene. All configurations are optionally available as Panel Mounted and/or High Ambient Temperature models.

- Call iPolymer for:**
- Metric Tube End options
 - Male Pipe End options
 - Sanitary Connection options

Stopcock Specifications	
Media Pressure	60 psi
Media temperature	100° C / 212° F
Ambient temperature	60° C / 140° F
All Wetted Surfaces	Virgin PTFE

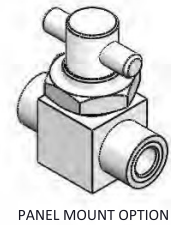
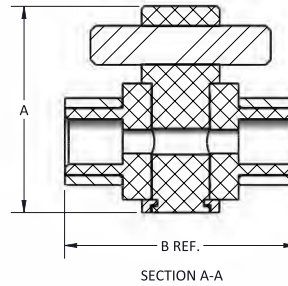
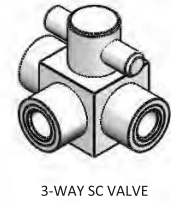
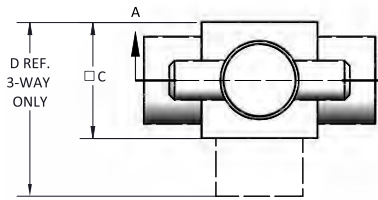
Valve Stem Configuration



Stopcock Valve: ORDERING FORMAT

- 4-Way Stopcock Valves are available. Please call iPolymer to properly configure your selection.
- The valve flow orifice is governed by your port end connections (FNPT, Tube or Flared) unless requested otherwise. Please call iPolymer to configure a restrictive Valve Stem Orifice.
- Maximum torque to turn/actuate stop cock approximately 25 in-lbs. Torque varies based on valve size and other factors.

Port Size	Port Type	Orifice	Body Style	Part No.
1/8"	FNPT	0.11	2-WAY	SC-400
			3-WAY	SC-401
	TUBE	0.09	2-WAY	SC-403
			3-WAY	SC-404
1/4"	FNPT	0.23	2-WAY	SC-500
			3-WAY	SC-501
	TUBE	0.19	2-WAY	SC-503
			3-WAY	SC-504
	FLARE	0.13	2-WAY	SC-506
			3-WAY	SC-507
3/8"	FNPT	0.28	2-WAY	SC-600
			3-WAY	SC-601
	TUBE	0.27	2-WAY	SC-609
			3-WAY	SC-610
	FLARE	0.25	2-WAY	SC-612
			3-WAY	SC-613
1/2"	FNPT	0.44	2-WAY	SC-700
			3-WAY	SC-701
	TUBE	0.39	2-WAY	SC-709
			3-WAY	SC-710
	FLARE	0.38	2-WAY	SC-712
			3-WAY	SC-713
3/4"	FNPT	0.45	2-WAY	SC-800
			3-WAY	SC-801
	TUBE	0.45	2-WAY	SC-809
			3-WAY	SC-810
	FLARE	0.45	2-WAY	SC-812
			3-WAY	SC-813



Basic Dimensions

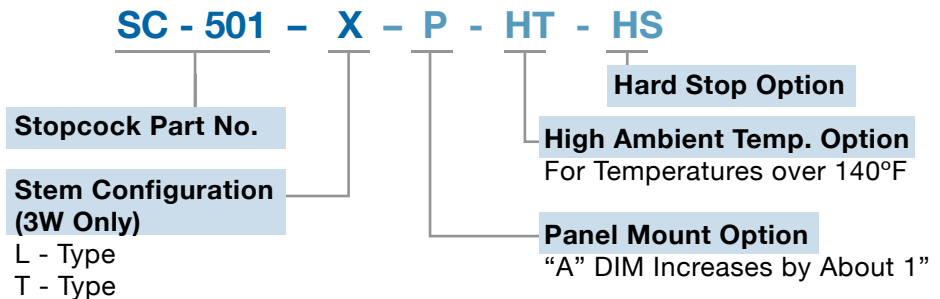
Series	Dim A	Dim B	Dim C	Dim D	PM Hole Size	Max Panel Thickness
SC-400	1.63	1.76	1.00	1.38	0.70	0.30
SC-500	2.00	2.25	1.13	1.69	0.90	0.30
SC-600	2.13	2.62	1.50	2.06	1.03	0.43
SC-700	2.33	3.25	1.88	2.57	1.40	0.43
SC-800	3.25	3.75	2.25	3.00	1.78	0.43

- For Flared Connections add ~3/8" per port.

Options:

- Add "-P" to the end of the Part Number to specify a Panel Mount configuration.
- Add "-HT" to the end of the Part Number for high ambient temperature conditions. This is only required for room temperatures above 140°F. The external non wetted components are changed to PVDF.
- Add "-HS" to the end of the Part Number for quarter turn hard stop.

PTFE Stopcocks: ORDERING FORMAT



Product Notes:

1. Please email Customer Service at info@pkm-konrad.ch
2. Call us for special applications. We can manufacture our Valves with special mounting and interface dimensions.
3. Upon request, alternate material selection from those listed will allow for expanding temperature ratings or other performance characteristics.
4. Unauthorized disassembly of this product will void the original factory one-year product warranty. For further details please contact us directly.

200304