

Inhaltsverzeichnis

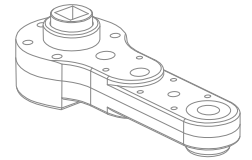
Content



Zungenvorsatzgetriebe geschlossen

3

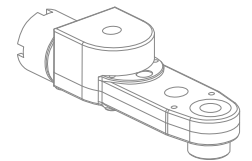
Crowfoot closed



Zungenvorsatzgetriebe geschlossen inline

19

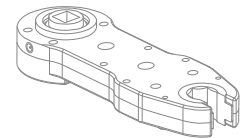
Crowfoot closed inline



Zungenvorsatzgetriebe offen

25

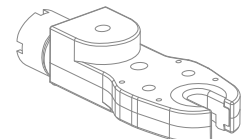
Crowfoot open



Zungenvorsatzgetriebe offen inline

30

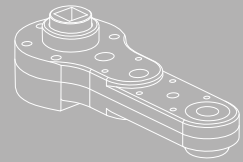
Crowfoot open inline



Kontakt

35

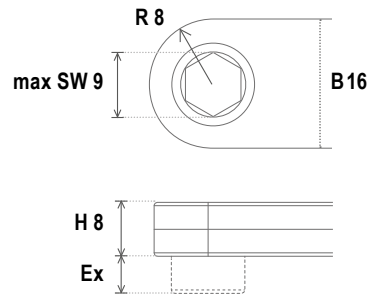
Contact



Zungenvorsatzgetriebe

Crowfeet

Zungenvorsatzgetriebe **geschlossen**
 Baugröße **ZVG1608**



max SW 9
 > kundenspezifisch
 > according customer

max Torque 6 Nm
R 8
B 16
H 8
I 1:1

Bestellbeispiel Baugröße Version Abtrieb Überstand
 Ordering example Size of frame Version Output Extension

ZVG1608 **05** **SW7** **Ex9**

ZVG160805		
max Torque	max Torque	5,5 Nm
Wirkungsgrad	Efficiency Factor	0,72

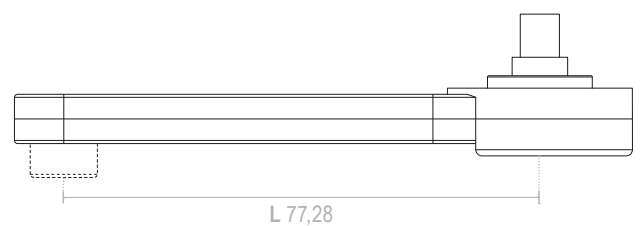
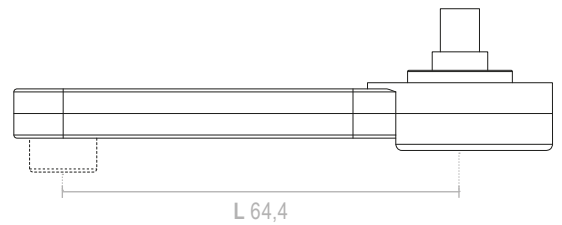
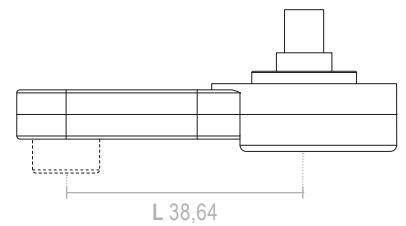
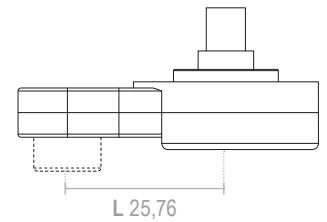
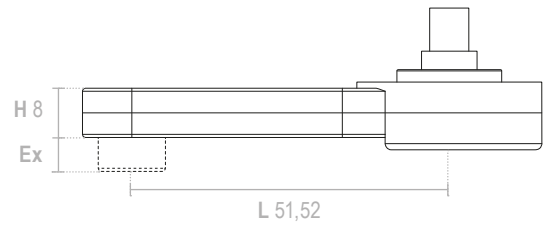
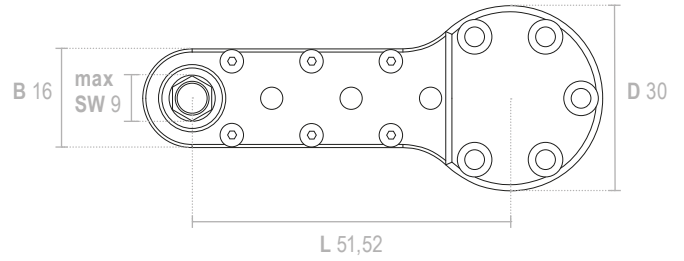
ZVG160803		
max Torque	max Torque	6 Nm
Wirkungsgrad	Efficiency Factor	0,8

ZVG160804		
max Torque	max Torque	5,5 Nm
Wirkungsgrad	Efficiency Factor	0,75
Drehrichtungsumkehr	Directional reversal	

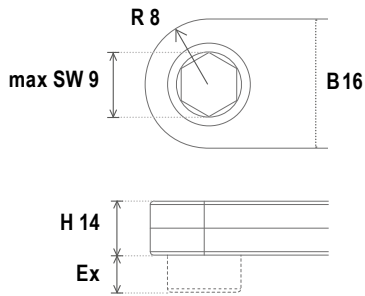
ZVG160806		
max Torque	max Torque	5,5 Nm
Wirkungsgrad	Efficiency Factor	0,7
Drehrichtungsumkehr	Directional reversal	

ZVG160807		
max Torque	max Torque	5,5 Nm
Wirkungsgrad	Efficiency Factor	0,68

Crowfoot **closed**
 Size of frame **ZVG1608**



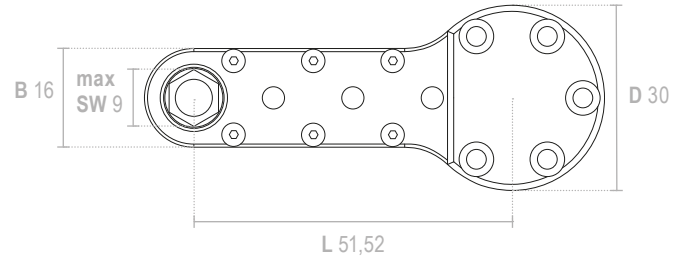
Zungenvorsatzgetriebe geschlossen Baugröße ZVG1614



max SW 9
> kundenspezifisch
> according customer

max Torque 11 Nm
R 8
B 16
H 14
I 1:1

Crowfoot closed Size of frame ZVG1614



Bestellbeispiel Baugröße Version Antrieb Überstand
Ordering example Size of frame Version Output Extension

ZVG1614 05 SW7 Ex10

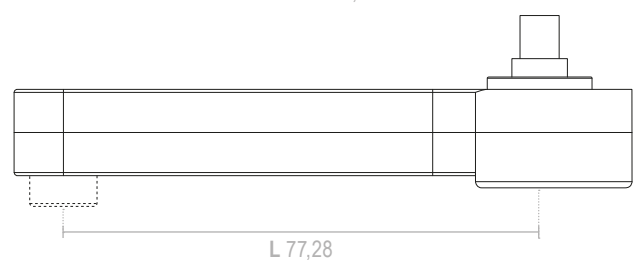
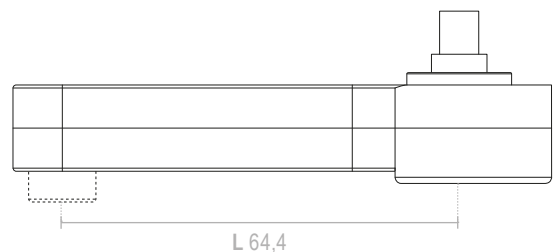
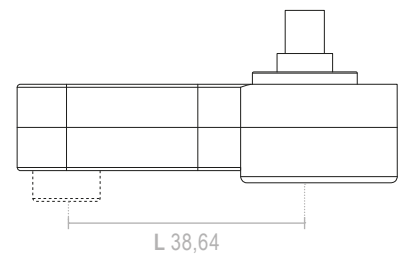
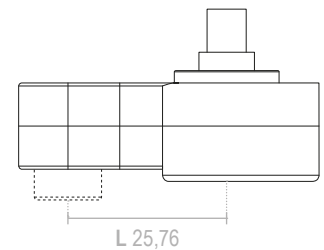
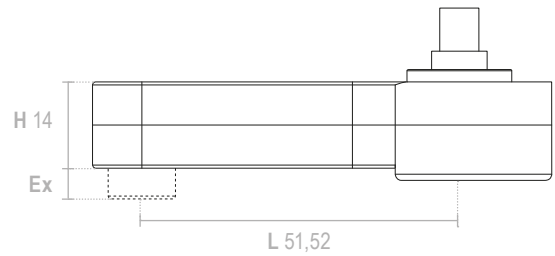
ZVG161405		
max Torque	max Torque	10 Nm
Wirkungsgrad	Efficiency Factor	0,72

ZVG161403		
max Torque	max Torque	11 Nm
Wirkungsgrad	Efficiency Factor	0,8

ZVG161404		
max Torque	max Torque	10 Nm
Wirkungsgrad	Efficiency Factor	0,75
Drehrichtungsumkehr	Directional reversal	

ZVG161406		
max Torque	max Torque	10 Nm
Wirkungsgrad	Efficiency Factor	0,7
Drehrichtungsumkehr	Directional reversal	

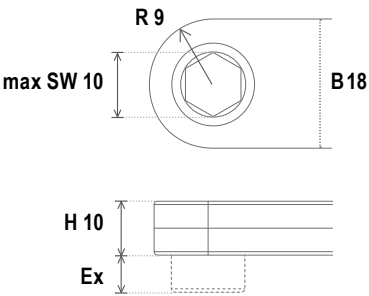
ZVG161407		
max Torque	max Torque	10 Nm
Wirkungsgrad	Efficiency Factor	0,68



Zungenvorsatzgetriebe

Crowfeet

Zungenvorsatzgetriebe geschlossen
Baugröße **ZVG1810**



max SW 10
> kundenspezifisch
> according customer
max Torque 9,5 Nm
R 9
B 18
H 10
I 1:1

Bestellbeispiel Baugröße Version Abtrieb Überstand
Ordering example Size of frame Version Output Extension

ZVG1810 05 SW8 Ex7

ZVG181005		
max Torque	max Torque	9,5 Nm
Wirkungsgrad	Efficiency Factor	0,72

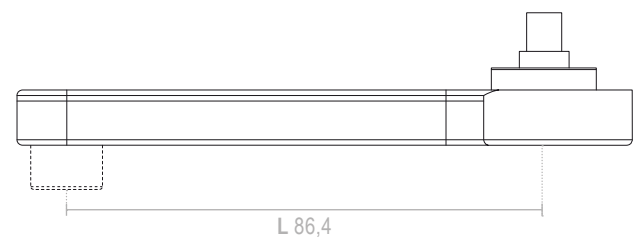
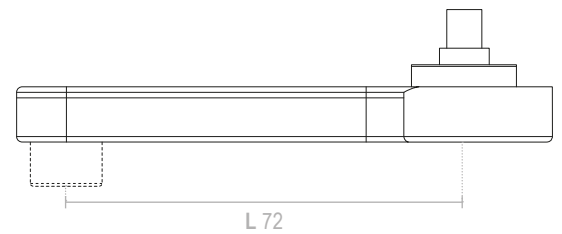
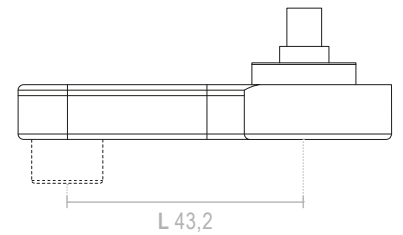
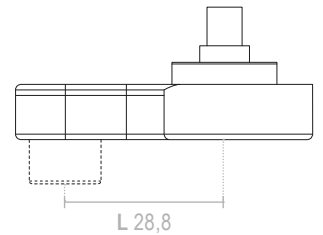
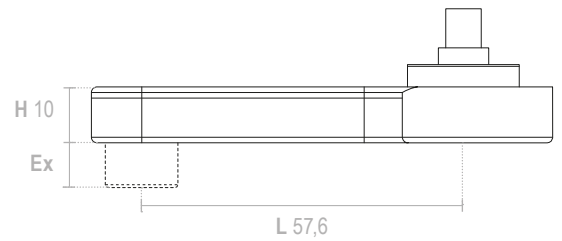
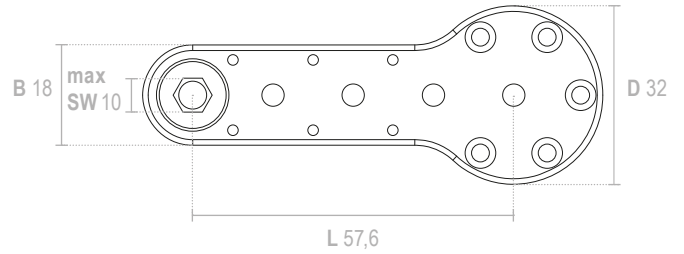
ZVG181003		
max Torque	max Torque	9,5 Nm
Wirkungsgrad	Efficiency Factor	0,8

ZVG181004		
max Torque	max Torque	9,5 Nm
Wirkungsgrad	Efficiency Factor	0,75
Drehrichtungsumkehr	Directional reversal	

ZVG181006		
max Torque	max Torque	9,5 Nm
Wirkungsgrad	Efficiency Factor	0,7
Drehrichtungsumkehr	Directional reversal	

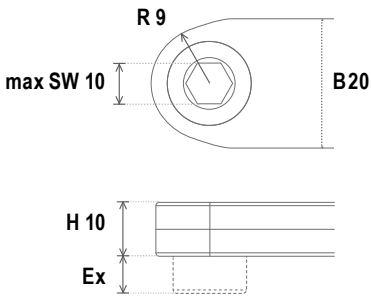
ZVG181007		
max Torque	max Torque	9,5 Nm
Wirkungsgrad	Efficiency Factor	0,68

Crowfoot closed
Size of frame **ZVG1810**



Zungenvorsatzgetriebe geschlossen

Baugröße **ZVG2010**

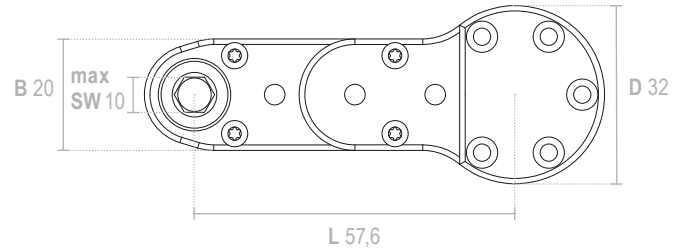


max SW 10
 > kundenspezifisch
 > according customer

max Torque 10,5 Nm
R 9
B 20
H 10
I 1:1

Crowfoot closed

Size of frame **ZVG2010**



Bestellbeispiel Baugröße Version Antrieb Überstand
 Ordering example Size of frame Version Output Extension

ZVG2010 **05** **SW8** **Ex9**

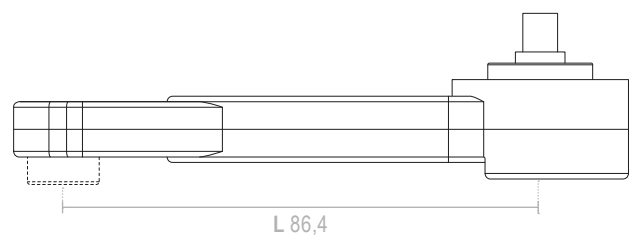
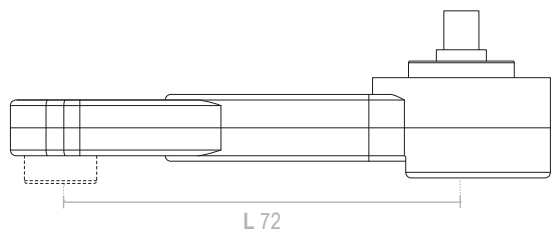
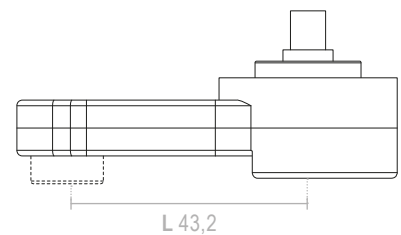
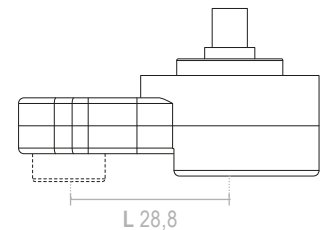
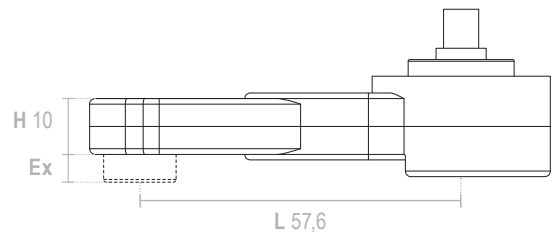
ZVG201005		
max Torque	max Torque	10,5 Nm
Wirkungsgrad	Efficiency Factor	0,72

ZVG201003		
max Torque	max Torque	10,5 Nm
Wirkungsgrad	Efficiency Factor	0,8

ZVG201004		
max Torque	max Torque	10,5 Nm
Wirkungsgrad	Efficiency Factor	0,75
Drehrichtungsumkehr	Directional reversal	

ZVG201006		
max Torque	max Torque	10,5 Nm
Wirkungsgrad	Efficiency Factor	0,7
Drehrichtungsumkehr	Directional reversal	

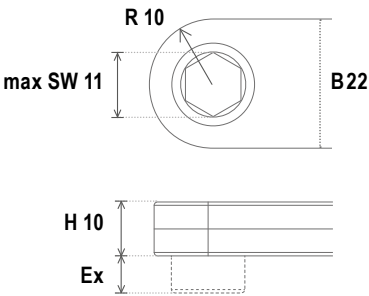
ZVG201007		
max Torque	max Torque	10,5 Nm
Wirkungsgrad	Efficiency Factor	0,68



Zungenvorsatzgetriebe

Crowfeet

Zungenvorsatzgetriebe **geschlossen**
 Baugröße **ZVG2210**



max SW 11
 > kundenspezifisch
 > according customer

max Torque 13 Nm
R 10
B 22
H 10
1:1

Bestellbeispiel Baugröße Version Abtrieb Überstand
 Ordering example Size of frame Version Output Extension

ZVG2210 05 SW9 Ex3

ZVG221005		
max Torque	max Torque	13 Nm
Wirkungsgrad	Efficiency Factor	0,72

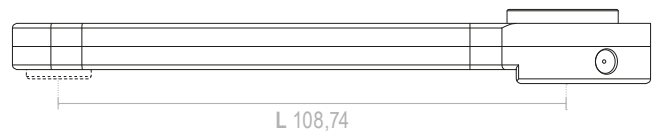
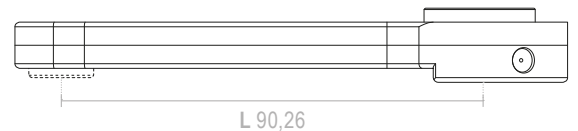
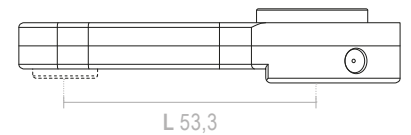
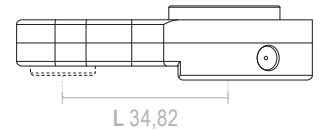
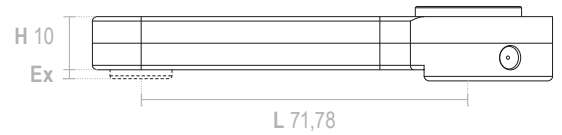
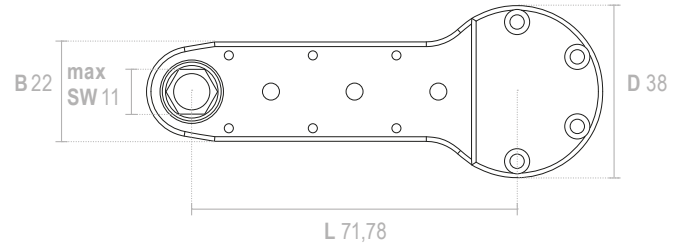
ZVG221003		
max Torque	max Torque	13 Nm
Wirkungsgrad	Efficiency Factor	0,8

ZVG221004		
max Torque	max Torque	13 Nm
Wirkungsgrad	Efficiency Factor	0,75
Drehrichtungsumkehr	Directional reversal	

ZVG221006		
max Torque	max Torque	13 Nm
Wirkungsgrad	Efficiency Factor	0,7
Drehrichtungsumkehr	Directional reversal	

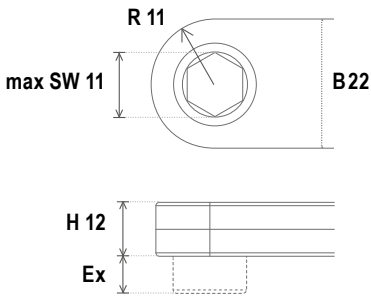
ZVG221007		
max Torque	max Torque	13 Nm
Wirkungsgrad	Efficiency Factor	0,68

Crowfoot closed
 Size of frame **ZVG2210**



Zungenvorsatzgetriebe geschlossen

Baugröße **ZVG2212**

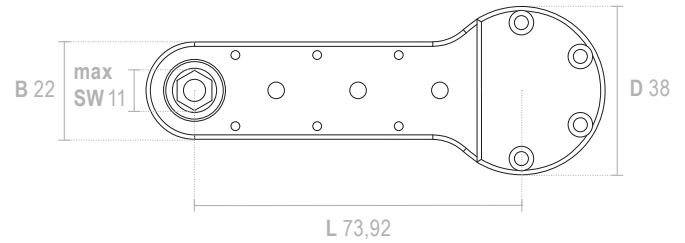


max SW 11
 > kundenspezifisch
 > according customer

max Torque 137 Nm
R 11
B 22
H 12
I 1:1

Crowfoot closed

Size of frame **ZVG2212**



Bestellbeispiel Baugröße Version Abtrieb Überstand
 Ordering example Size of frame Version Output Extension

ZVG2212 **05** **SW9** **Ex4**

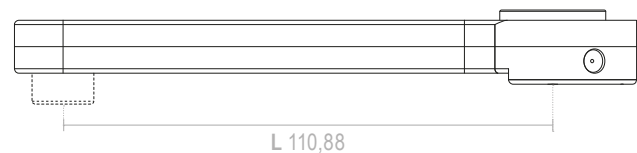
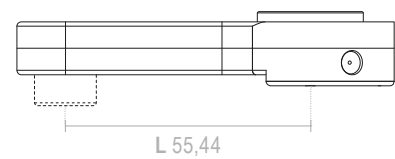
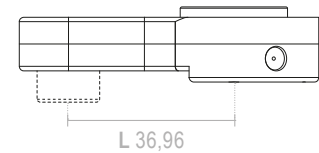
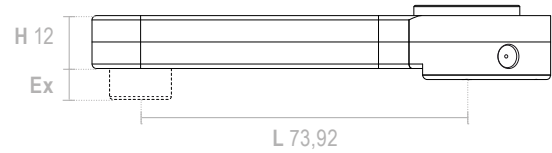
ZVG221205		
max Torque	max Torque	17 Nm
Wirkungsgrad	Efficiency Factor	0,72

ZVG221203		
max Torque	max Torque	17 Nm
Wirkungsgrad	Efficiency Factor	0,8

ZVG221204		
max Torque	max Torque	17 Nm
Wirkungsgrad	Efficiency Factor	0,75
Drehrichtungsumkehr	Directional reversal	

ZVG221206		
max Torque	max Torque	17 Nm
Wirkungsgrad	Efficiency Factor	0,7
Drehrichtungsumkehr	Directional reversal	

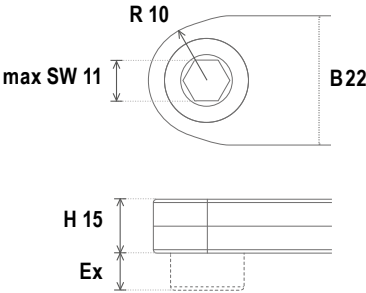
ZVG221207		
max Torque	max Torque	16 Nm
Wirkungsgrad	Efficiency Factor	0,68



Zungenvorsatzgetriebe

Crowfeet

Zungenvorsatzgetriebe **geschlossen**
 Baugröße **ZVG2215**



max SW 11
 > kundenspezifisch
 > according customer

max Torque 19 Nm
R 10
B 22
H 15
1:1

Bestellbeispiel Baugröße Version Antrieb Überstand
 Ordering example Size of frame Version Output Extension

ZVG2215 **05** **SW9** **Ex6**

ZVG221505		
max Torque	max Torque	18 Nm
Wirkungsgrad	Efficiency Factor	0,72

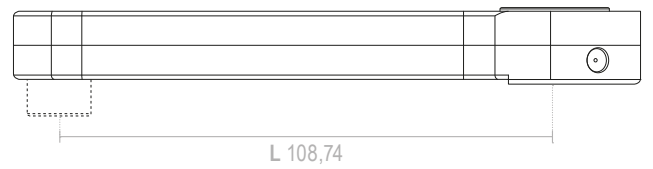
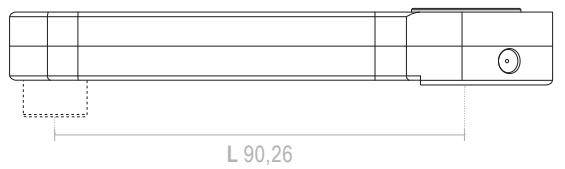
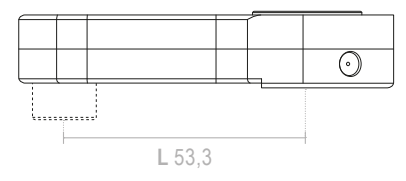
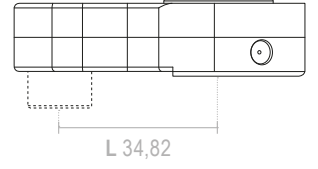
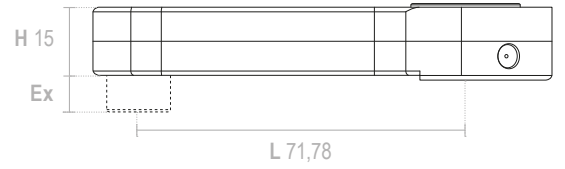
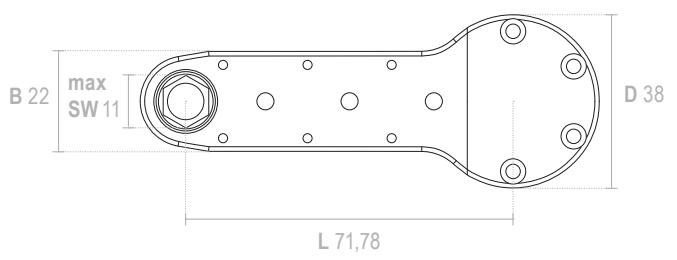
ZVG221503		
max Torque	max Torque	19 Nm
Wirkungsgrad	Efficiency Factor	0,8

ZVG221504		
max Torque	max Torque	18 Nm
Wirkungsgrad	Efficiency Factor	0,75
Drehrichtungsumkehr	Directional reversal	

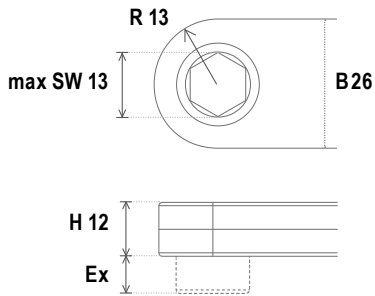
ZVG221506		
max Torque	max Torque	18 Nm
Wirkungsgrad	Efficiency Factor	0,7
Drehrichtungsumkehr	Directional reversal	

ZVG221507		
max Torque	max Torque	18 Nm
Wirkungsgrad	Efficiency Factor	0,68

Crowfoot closed
 Size of frame **ZVG2215**



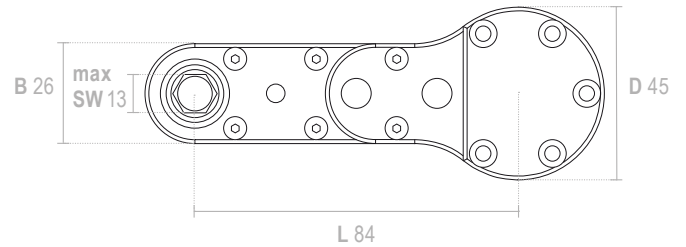
Zungenvorsatzgetriebe geschlossen Baugröße ZVG2612



max SW 13
> kundenspezifisch
> according customer

max Torque 27 Nm
R 13
B 26
H 12
I 1:1

Crowfoot closed Size of frame ZVG2612



Bestellbeispiel Baugröße Version Abtrieb Überstand
Ordering example Size of frame Version Output Extension

ZVG2612 **05** **SW11** **Ex9**

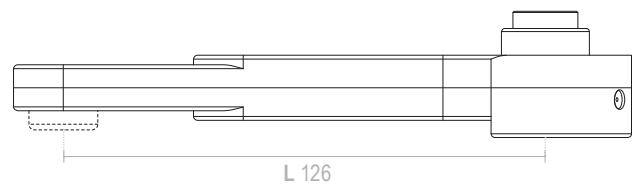
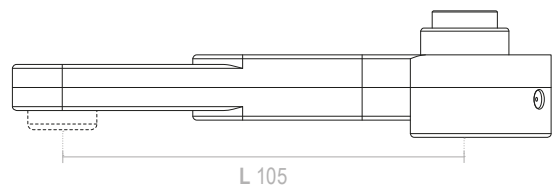
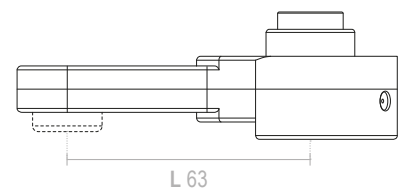
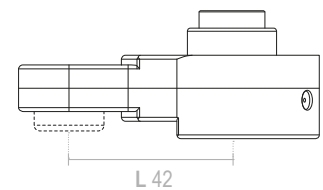
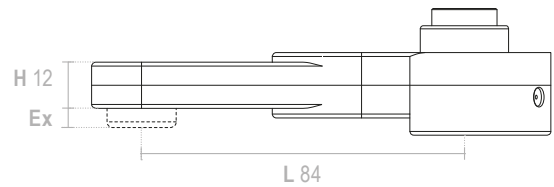
ZVG261205		
max Torque	max Torque	26 Nm
Wirkungsgrad	Efficiency Factor	0,72

ZVG261203		
max Torque	max Torque	27 Nm
Wirkungsgrad	Efficiency Factor	0,8

ZVG261204		
max Torque	max Torque	26 Nm
Wirkungsgrad	Efficiency Factor	0,75
Drehrichtungsumkehr	Directional reversal	

ZVG261206		
max Torque	max Torque	26 Nm
Wirkungsgrad	Efficiency Factor	0,7
Drehrichtungsumkehr	Directional reversal	

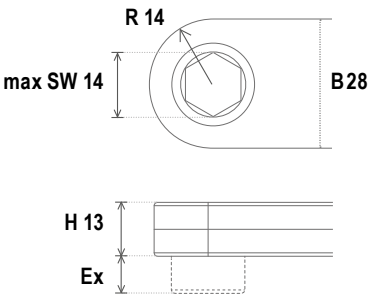
ZVG261207		
max Torque	max Torque	25 Nm
Wirkungsgrad	Efficiency Factor	0,68



Zungenvorsatzgetriebe

Crowfeet

Zungenvorsatzgetriebe geschlossen
Baugröße **ZVG2813**



max SW 14
> kundenspezifisch
> according customer

max Torque 33 Nm
R 14
B 28
H 13
I 1:1

Bestellbeispiel Baugröße Version Antrieb Überstand
Ordering example Size of frame Version Output Extension

ZVG2813 05 SW12 Ex4

ZVG281305		
max Torque	max Torque	32 Nm
Wirkungsgrad	Efficiency Factor	0,72

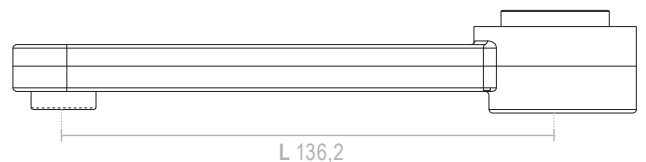
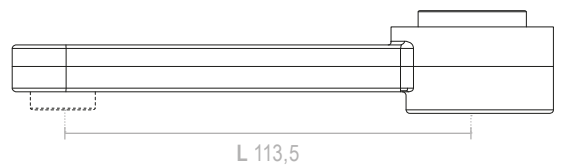
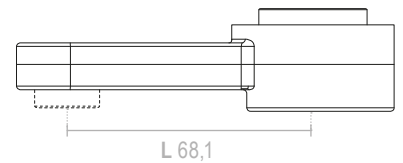
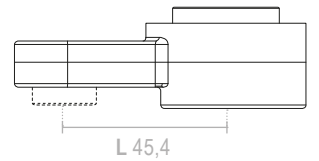
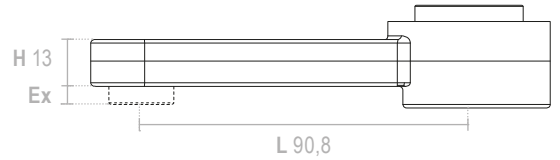
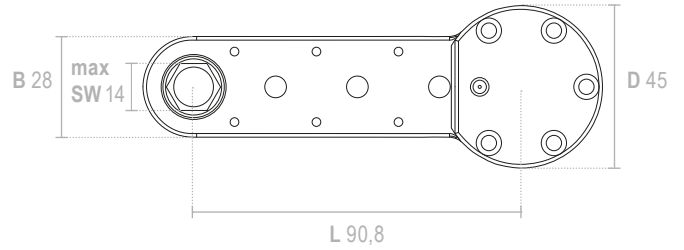
ZVG281303		
max Torque	max Torque	33 Nm
Wirkungsgrad	Efficiency Factor	0,8

ZVG281304		
max Torque	max Torque	32 Nm
Wirkungsgrad	Efficiency Factor	0,75
Drehrichtungsumkehr	Directional reversal	

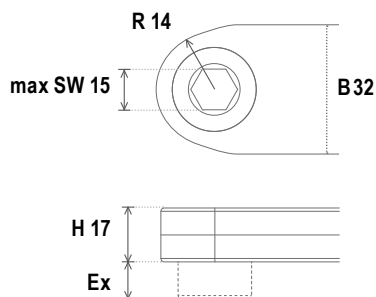
ZVG281306		
max Torque	max Torque	32 Nm
Wirkungsgrad	Efficiency Factor	0,7
Drehrichtungsumkehr	Directional reversal	

ZVG281307		
max Torque	max Torque	31 Nm
Wirkungsgrad	Efficiency Factor	0,68

Crowfoot closed
Size of frame **ZVG2813**



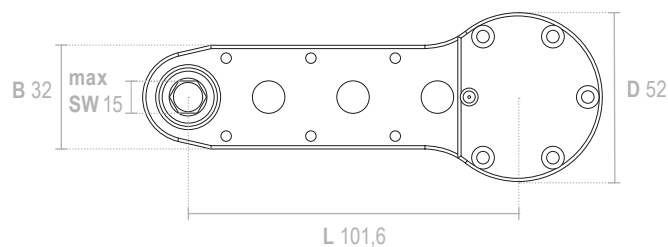
Zungenvorsatzgetriebe geschlossen Baugröße ZVG3217



max SW 15
> kundenspezifisch
> according customer

max Torque 34 Nm
R 14
B 32
H 17
I 1:1

Crowfoot closed Size of frame ZVG3217



Bestellbeispiel Baugröße Version Abtrieb Überstand
Ordering example Size of frame Version Output Extension

ZVG3217 **05** **SW13** **Ex7**

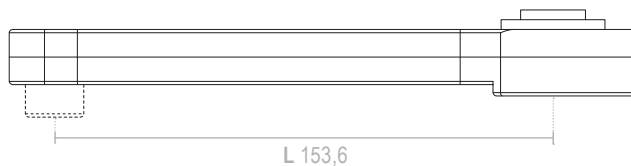
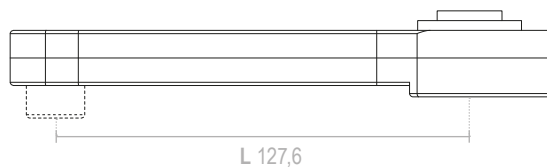
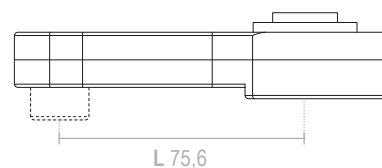
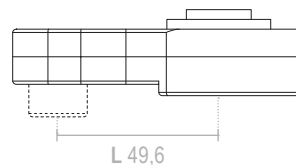
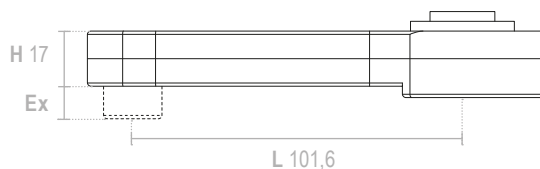
ZVG321705		
max Torque	max Torque	34 Nm
Wirkungsgrad	Efficiency Factor	0,72

ZVG321703		
max Torque	max Torque	34 Nm
Wirkungsgrad	Efficiency Factor	0,8

ZVG321704		
max Torque	max Torque	34 Nm
Wirkungsgrad	Efficiency Factor	0,75
Drehrichtungsumkehr	Directional reversal	

ZVG321706		
max Torque	max Torque	34 Nm
Wirkungsgrad	Efficiency Factor	0,7
Drehrichtungsumkehr	Directional reversal	

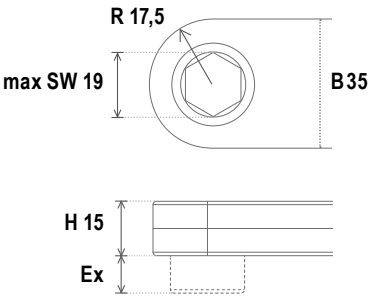
ZVG321707		
max Torque	max Torque	34 Nm
Wirkungsgrad	Efficiency Factor	0,68



Zungenvorsatzgetriebe

Crowfeet

Zungenvorsatzgetriebe **geschlossen**
 Baugröße **ZVG3515**



max SW 19
 > kundenspezifisch
 > according customer

max Torque 52 Nm
R 17,5
B 35
H 15
I 1:1

Bestellbeispiel Baugröße Version Abtrieb Überstand
 Ordering example Size of frame Version Output Extension

ZVG3515 05 SW17 Ex11

ZVG351505		
max Torque	max Torque	50 Nm
Wirkungsgrad	Efficiency Factor	0,72

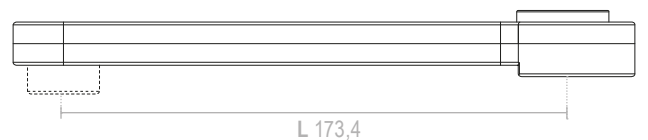
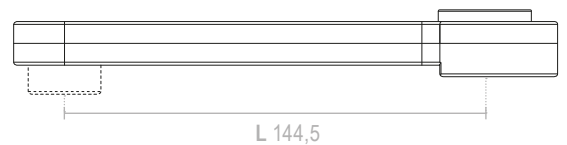
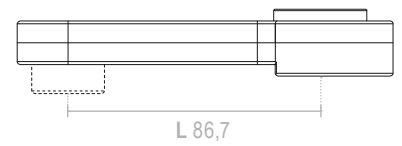
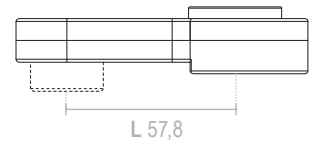
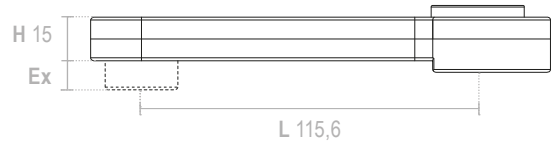
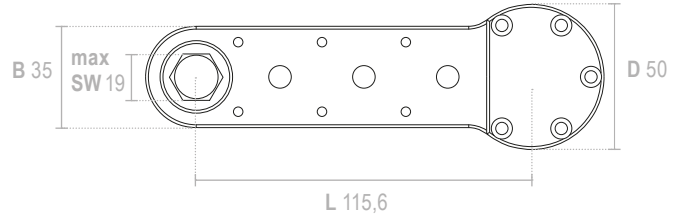
ZVG3515303		
max Torque	max Torque	52 Nm
Wirkungsgrad	Efficiency Factor	0,8

ZVG351504		
max Torque	max Torque	51 Nm
Wirkungsgrad	Efficiency Factor	0,75
Drehrichtungsumkehr	Directional reversal	

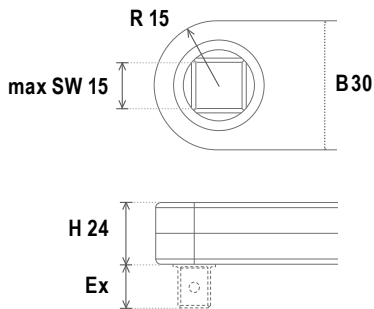
ZVG351506		
max Torque	max Torque	50 Nm
Wirkungsgrad	Efficiency Factor	0,7
Drehrichtungsumkehr	Directional reversal	

ZVG351507		
max Torque	max Torque	50 Nm
Wirkungsgrad	Efficiency Factor	0,68

Crowfoot **closed**
 Size of frame **ZVG3515**



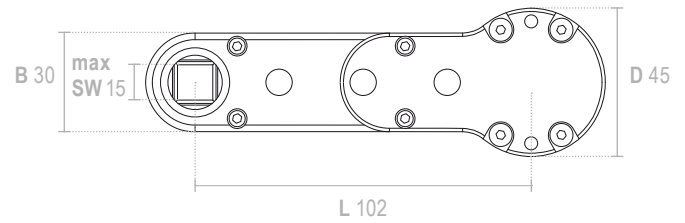
Zungenvorsatzgetriebe geschlossen Baugröße ZVG3024



max SW 15
> kundenspezifisch
> according customer

max Torque 65 Nm
R 15
B 30
H 24
I 1:1

Crowfoot closed Size of frame ZVG3024



Bestellbeispiel Baugröße Version Abtrieb Überstand
Ordering example Size of frame Version Output Extension

ZVG3024 05 SW13 Ex8

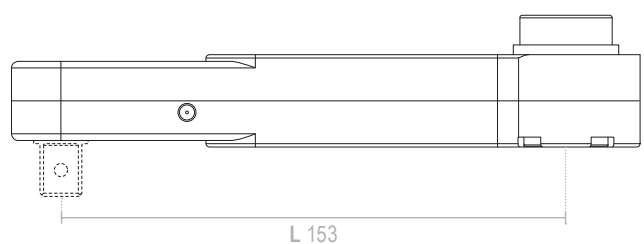
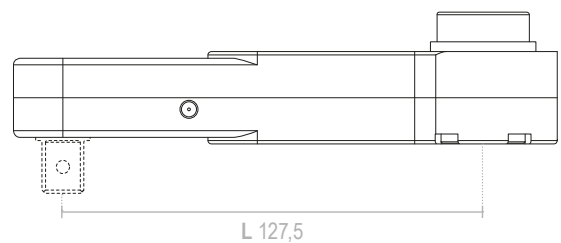
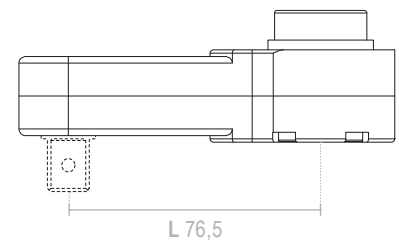
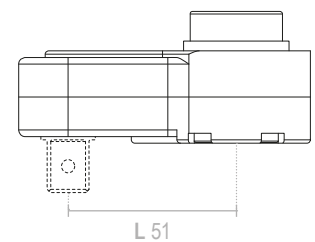
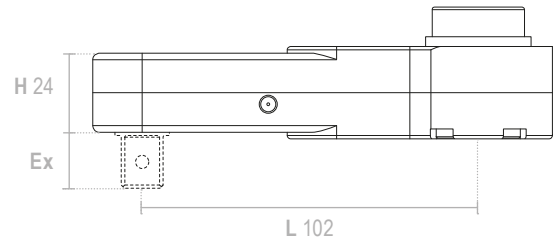
ZVG302405		
max Torque	max Torque	65 Nm
Wirkungsgrad	Efficiency Factor	0,72

ZVG302403		
max Torque	max Torque	65 Nm
Wirkungsgrad	Efficiency Factor	0,8

ZVG302404		
max Torque	max Torque	65 Nm
Wirkungsgrad	Efficiency Factor	0,75
Drehrichtungsumkehr	Directional reversal	

ZVG302406		
max Torque	max Torque	65 Nm
Wirkungsgrad	Efficiency Factor	0,7
Drehrichtungsumkehr	Directional reversal	

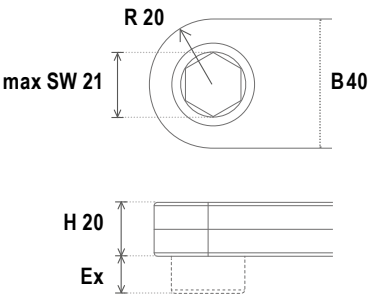
ZVG302407		
max Torque	max Torque	65 Nm
Wirkungsgrad	Efficiency Factor	0,68



Zungenvorsatzgetriebe

Crowfeet

Zungenvorsatzgetriebe **geschlossen**
 Baugröße **ZVG4020**



max SW 21
 > kundenspezifisch
 > according customer

max Torque 80 Nm
R 20
B 40
H 20
I 1:1

Bestellbeispiel Baugröße Version Abtrieb Überstand
 Ordering example Size of frame Version Output Extension

ZVG4020 05 SW19 Ex4

ZVG402005		
max Torque	max Torque	80 Nm
Wirkungsgrad	Efficiency Factor	0,72

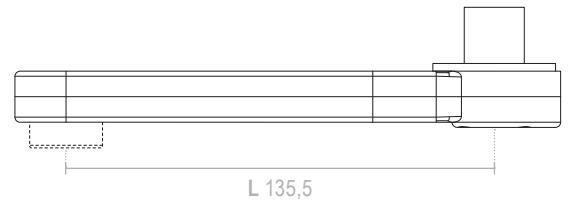
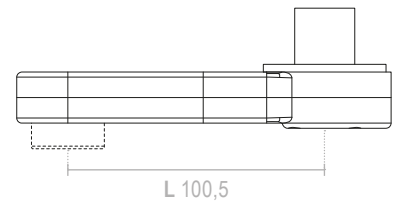
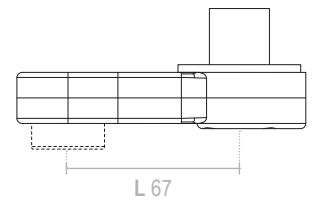
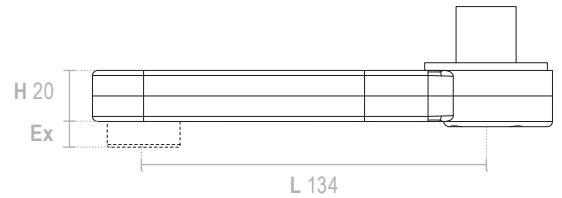
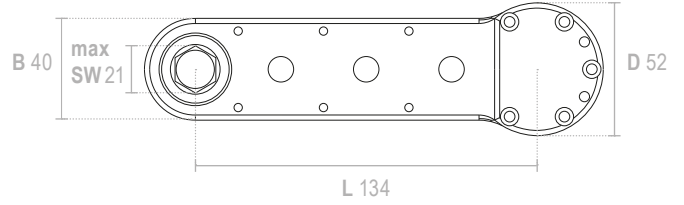
ZVG402003		
max Torque	max Torque	80 Nm
Wirkungsgrad	Efficiency Factor	0,8

ZVG402004		
max Torque	max Torque	80 Nm
Wirkungsgrad	Efficiency Factor	0,75
Drehrichtungsumkehr	Directional reversal	

ZVG402006		
max Torque	max Torque	80 Nm
Wirkungsgrad	Efficiency Factor	0,7
Drehrichtungsumkehr	Directional reversal	

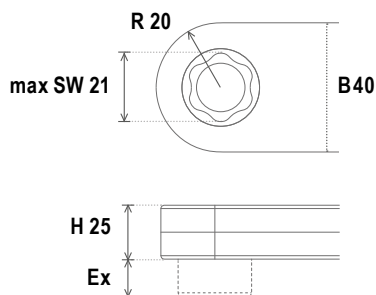
ZVG402007		
max Torque	max Torque	80 Nm
Wirkungsgrad	Efficiency Factor	0,68

Crowfoot closed
 Size of frame **ZVG4020**



Zungenvorsatzgetriebe geschlossen

Baugröße **ZVG4025**

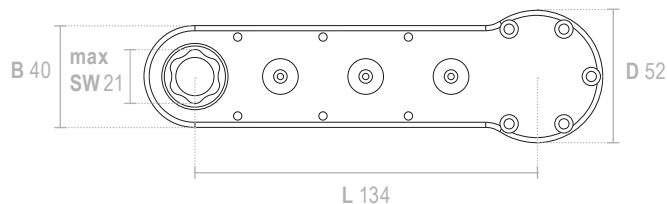


max SW 21
 > kundenspezifisch
 > according customer

max Torque 110 Nm
R 20
B 40
H 25
I 1:1

Crowfoot closed

Size of frame **ZVG4025**



Bestellbeispiel Baugröße Version Abtrieb Überstand
 Ordering example Size of frame Version Output Extension

ZVG4025 **05** **SW19** **Ex7**

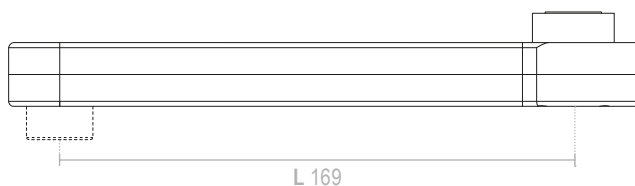
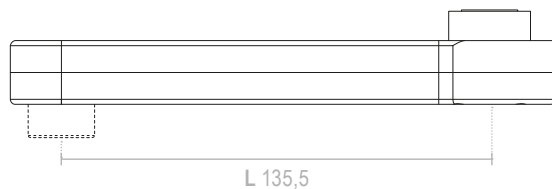
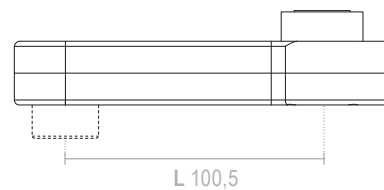
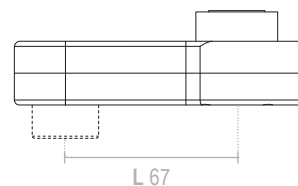
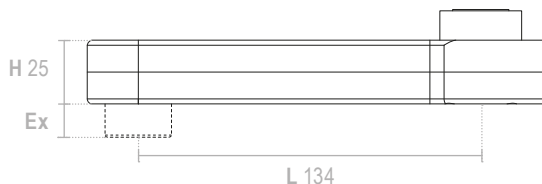
ZVG402505		
max Torque	max Torque	110 Nm
Wirkungsgrad	Efficiency Factor	0,72

ZVG402503		
max Torque	max Torque	110 Nm
Wirkungsgrad	Efficiency Factor	0,8

ZVG402504		
max Torque	max Torque	110 Nm
Wirkungsgrad	Efficiency Factor	0,75
Drehrichtungsumkehr	Directional reversal	

ZVG402506		
max Torque	max Torque	110 Nm
Wirkungsgrad	Efficiency Factor	0,7
Drehrichtungsumkehr	Directional reversal	

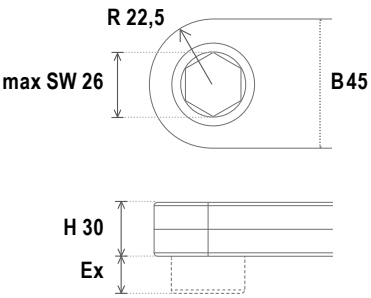
ZVG402507		
max Torque	max Torque	110 Nm
Wirkungsgrad	Efficiency Factor	0,68



Zungenvorsatzgetriebe

Crowfeet

Zungenvorsatzgetriebe **geschlossen**
 Baugröße **ZVG4530**



max SW 26
 > kundenspezifisch
 > according customer

max Torque 200 Nm
R 22,5
B 45
H 30
I 1:1

Bestellbeispiel Baugröße Version Abtrieb Überstand
 Ordering example Size of frame Version Output Extension

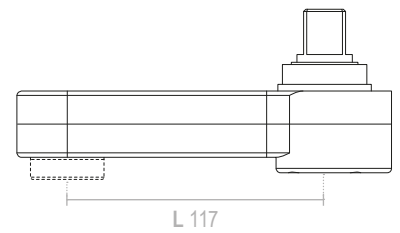
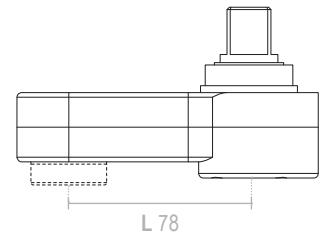
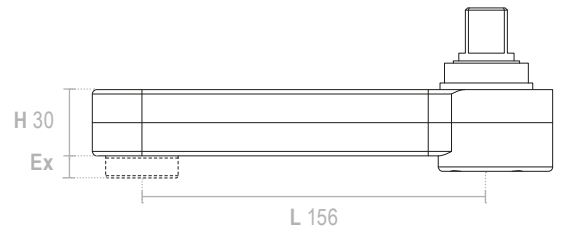
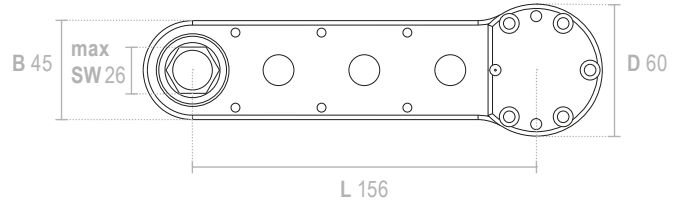
ZVG4530 05 SW24 Ex5

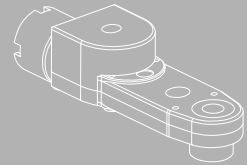
ZVG453005		
max Torque	max Torque	200 Nm
Wirkungsgrad	Efficiency Factor	0,72

ZVG453003		
max Torque	max Torque	200 Nm
Wirkungsgrad	Efficiency Factor	0,8

ZVG453004		
max Torque	max Torque	200 Nm
Wirkungsgrad	Efficiency Factor	0,75
Drehrichtungsumkehr	Directional reversal	

Crowfoot closed
 Size of frame **ZVG4530**





ZVG geschlossen inline

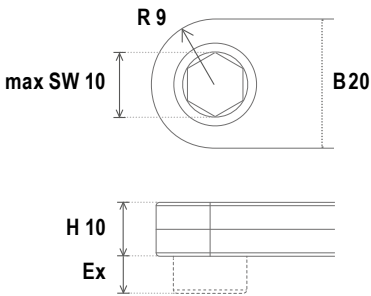
Zungenvorsatzgetriebe

Crowfeet

Zungenvorsatzgetriebe **geschlossen inline**
 Baugröße **ZVGI2010**



ZVG geschlossen inline



max SW 10
 > kundenspezifisch
 > according customer

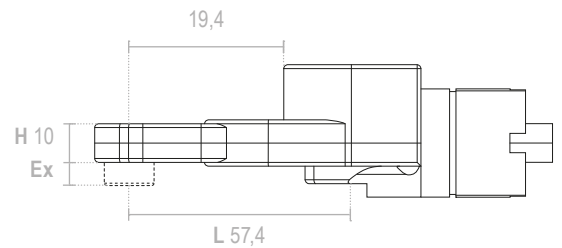
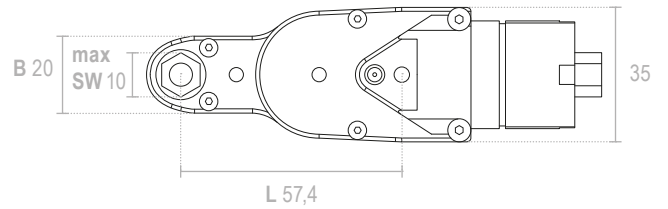
max Torque 10 Nm
R 9
B 20
H 10
I 1,33:1

Bestellbeispiel Baugröße Version Abtrieb Überstand
 Ordering example Size of frame Version Output Extension

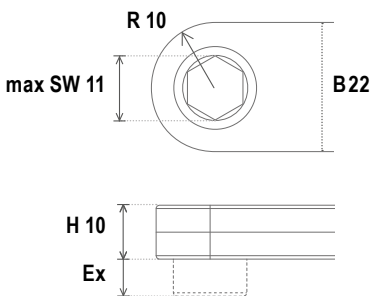
ZVGI2010 **05** **SW8** **Ex11**

ZVGI201005		
max Torque	max Torque	10 Nm
Wirkungsgrad	Efficiency Factor	0,7

Crowfoot closed inline
 Size of frame **ZVGI2010**



Zungenvorsatzgetriebe **geschlossen inline**
 Baugröße **ZVGI2210**



max SW 11
 > kundenspezifisch
 > according customer

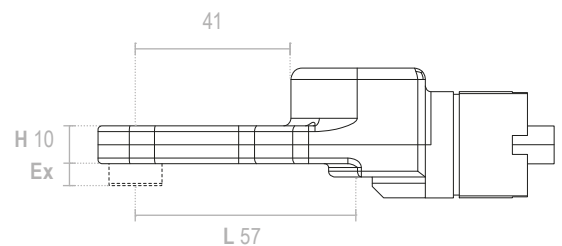
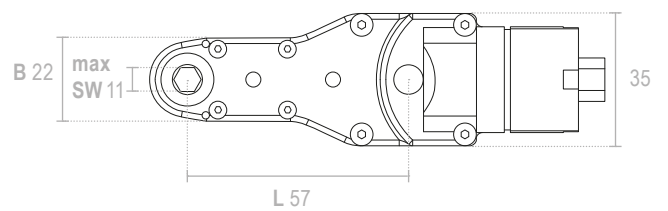
max Torque 12 Nm
R 10
B 22
H 10
I 1,33:1

Bestellbeispiel Baugröße Version Abtrieb Überstand
 Ordering example Size of frame Version Output Extension

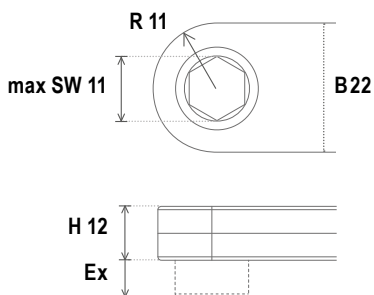
ZVGI2210 **05** **SW9** **Ex6**

ZVGI221005		
max Torque	max Torque	12 Nm
Wirkungsgrad	Efficiency Factor	0,7

Crowfoot closed inline
 Size of frame **ZVGI2210**



Zungenvorsatzgetriebe geschlossen inline Baugröße ZVGI2212



max SW 11
> kundenspezifisch
> according customer

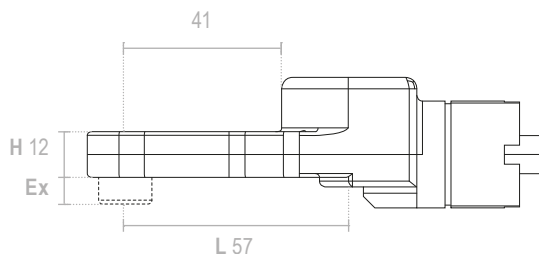
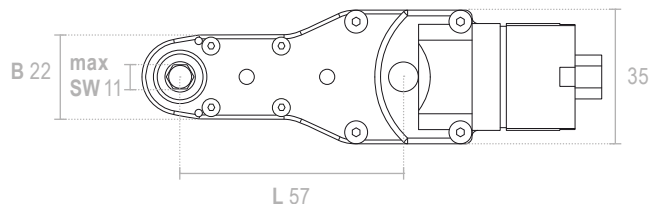
max Torque 15 Nm
R 11
B 22
H 12
I 1,3:1

Bestellbeispiel Baugröße Version Abtrieb Überstand
Ordering example Size of frame Version Output Extension

ZVGI2212 05 SW9 Ex7

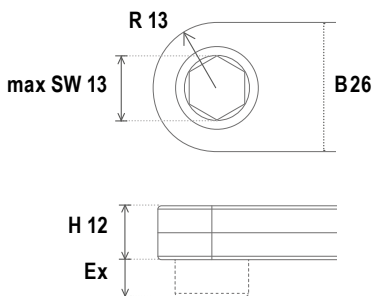
ZVGI221205		
max Torque	max Torque	15 Nm
Wirkungsgrad	Efficiency Factor	0,7

Crowfoot closed inline Size of frame ZVGI2212



ZVG geschlossen inline

Zungenvorsatzgetriebe geschlossen inline Baugröße ZVGI2612



max SW 13
> kundenspezifisch
> according customer

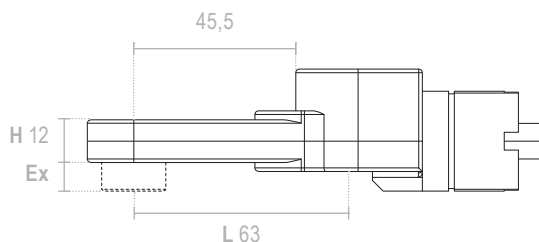
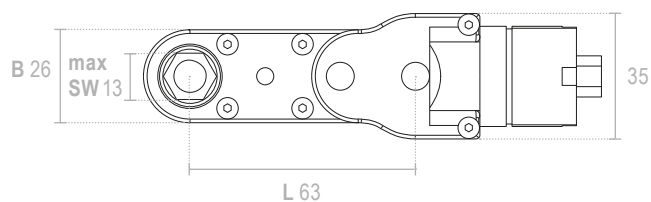
max Torque 24 Nm
R 13
B 26
H 12
I 1,33:1

Bestellbeispiel Baugröße Version Abtrieb Überstand
Ordering example Size of frame Version Output Extension

ZVGI2612 05 SW11 Ex3

ZVGI261205		
max Torque	max Torque	24 Nm
Wirkungsgrad	Efficiency Factor	0,7

Crowfoot closed inline Size of frame ZVGI2612



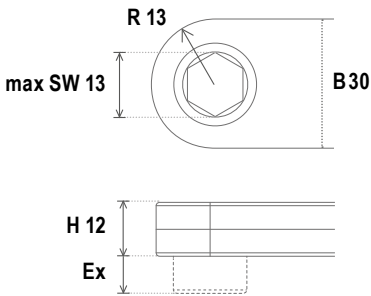
Zungenvorsatzgetriebe

Crowfeet

Zungenvorsatzgetriebe **geschlossen inline**
Baugröße **ZVGI3012**



ZVG geschlossen inline



max SW 13
> kundenspezifisch
> according customer

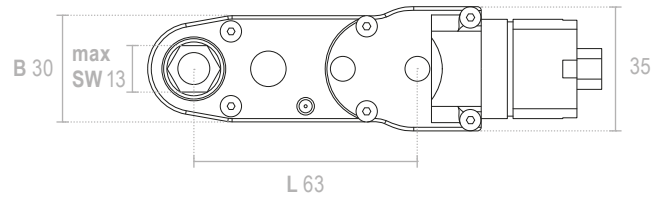
max Torque 26 Nm
R 13
B 30
H 12
I 1,33:1

Bestellbeispiel Baugröße Version Abtrieb Überstand
Ordering example Size of frame Version Output Extension

ZVGI3012 **05** **SW11** **Ex6**

ZVGI301205		
max Torque	max Torque	26 Nm
Wirkungsgrad	Efficiency Factor	0,7

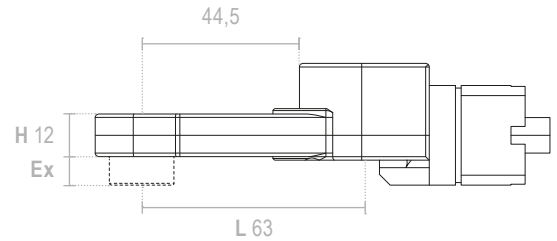
Crowfoot closed inline
Size of frame **ZVGI3012**



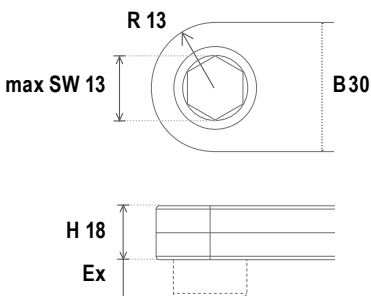
Bestellbeispiel Baugröße Version Abtrieb Überstand
Ordering example Size of frame Version Output Extension

ZVGI3012 **05** **SW11** **Ex6**

ZVGI301205		
max Torque	max Torque	26 Nm
Wirkungsgrad	Efficiency Factor	0,7



Zungenvorsatzgetriebe **geschlossen inline**
Baugröße **ZVGI3018**



max SW 13
> kundenspezifisch
> according customer

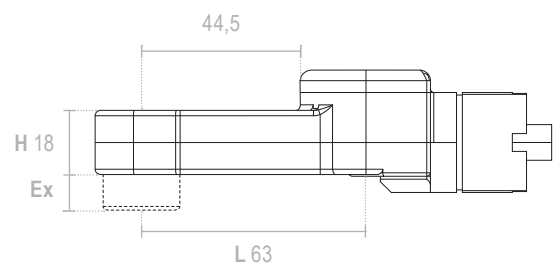
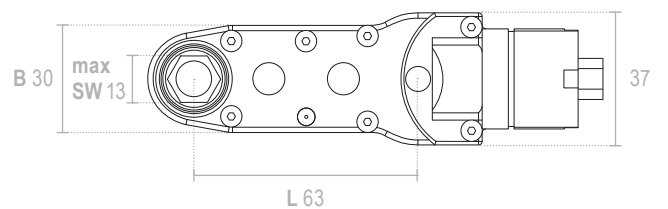
max Torque 38 Nm
R 13
B 30
H 18
I 1,33:1

Bestellbeispiel Baugröße Version Abtrieb Überstand
Ordering example Size of frame Version Output Extension

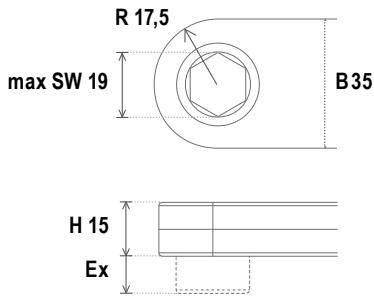
ZVGI3018 **05** **SW11** **Ex4**

ZVGI301805		
max Torque	max Torque	38 Nm
Wirkungsgrad	Efficiency Factor	0,7

Crowfoot closed inline
Size of frame **ZVGI3018**



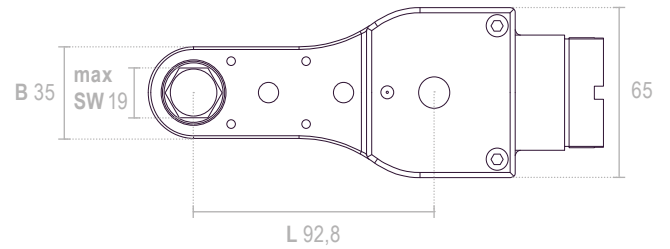
Zungenvorsatzgetriebe geschlossen inline Baugröße ZVGI3515



max SW 19
> kundenspezifisch
> according customer

max Torque x Nm
R 17,5
B 35
H 15
I 1,36:1

Crowfoot closed inline Size of frame ZVGI3515

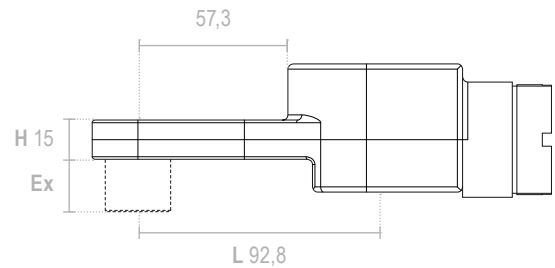


ZVG geschlossen inline

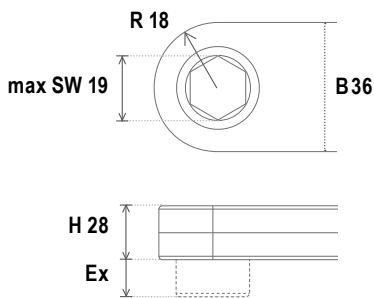
Bestellbeispiel Baugröße Version Abtrieb Überstand
Ordering example Size of frame Version Output Extension

ZVGI3515 **05** **SW17** **Ex4**

ZVGI351505		
max Torque	max Torque	50 Nm
Wirkungsgrad	Efficiency Factor	0,7



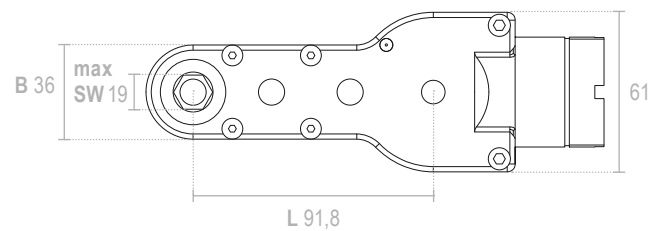
Zungenvorsatzgetriebe geschlossen inline Baugröße ZVGI3628



max SW 19
> kundenspezifisch
> according customer

max Torque 85 Nm
R 18
B 36
H 28
I 1,9:1

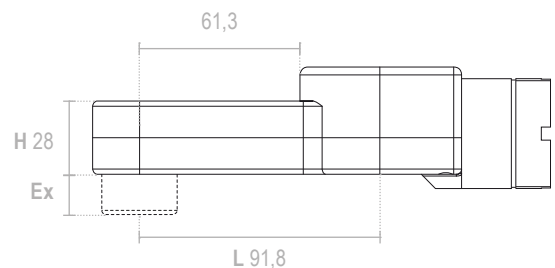
Crowfoot closed inline Size of frame ZVGI3628



Bestellbeispiel Baugröße Version Abtrieb Überstand
Ordering example Size of frame Version Output Extension

ZVGI3628 **05** **SW19** **Ex4**

ZVGI362805		
max Torque	max Torque	85 Nm
Wirkungsgrad	Efficiency Factor	0,7



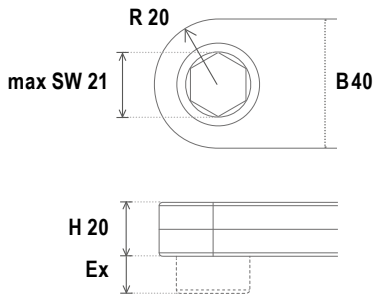
Zungenvorsatzgetriebe

Crowfeet

Zungenvorsatzgetriebe **geschlossen inline**
Baugröße **ZVGI4020**



ZVG geschlossen inline



max SW 21
> kundenspezifisch
> according customer

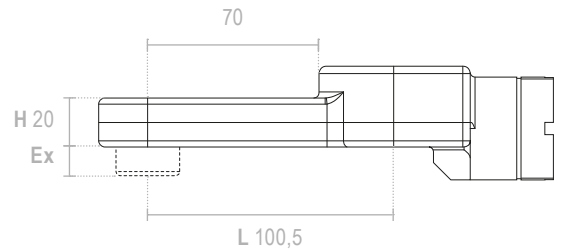
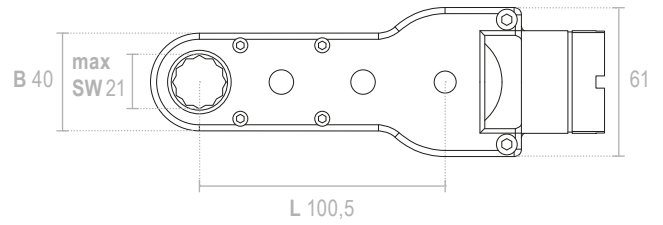
max Torque 80 Nm
R 20
B 40
H 20
12:1

Bestellbeispiel Baugröße Version Abtrieb Überstand
Ordering example Size of frame Version Output Extension

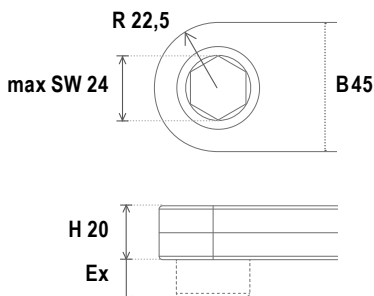
ZVGI4020 **05** **SW19** **Ex8**

ZVGI402005		
max Torque	max Torque	80 Nm
Wirkungsgrad	Efficiency Factor	0,7

Crowfoot closed inline
Size of frame **ZVGI4020**



Zungenvorsatzgetriebe **geschlossen inline**
Baugröße **ZVGI4520**



max SW 24
> kundenspezifisch
> according customer

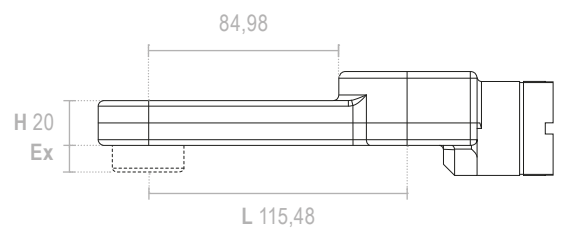
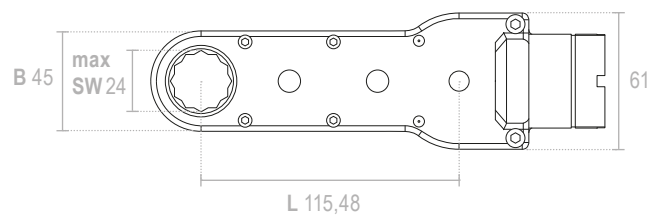
max Torque 95 Nm
R 22,5
B 45
H 20
12,4:1

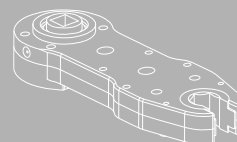
Bestellbeispiel Baugröße Version Abtrieb Überstand
Ordering example Size of frame Version Output Extension

ZVGI4520 **05** **SW22** **Ex6**

ZVGI452005		
max Torque	max Torque	95 Nm
Wirkungsgrad	Efficiency Factor	0,7

Crowfoot closed inline
Size of frame **ZVGI4520**



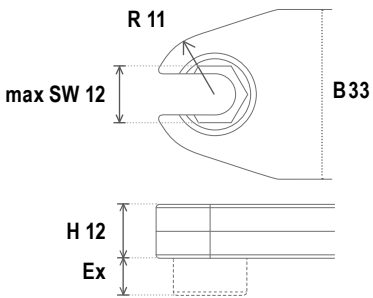


Z/G offen

Zungenvorsatzgetriebe

Crowfeet

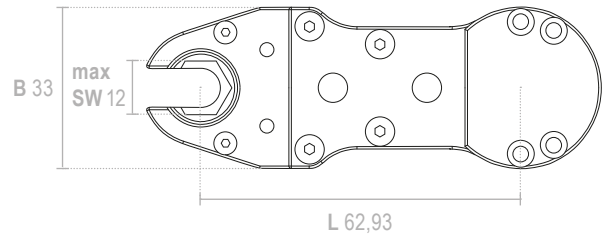
Zungenvorsatzgetriebe **offen**
 Baugröße **ZVGO3312**



max SW 15
 > kundenspezifisch
 > according customer

max Torque 20 Nm
R 11
B 33
H 12
I 1:1

Crowfoot **open**
 Size of frame **ZVGO3312**



ZVG offen

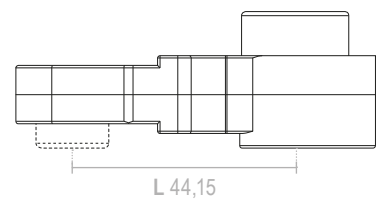
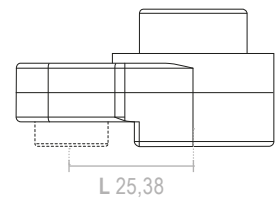
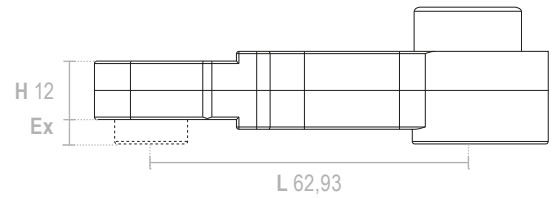
Bestellbeispiel Baugröße Version Abtrieb Überstand
 Ordering example Size of frame Version Output Extension

ZVGO3312 **05** **SW10** **Ex5**

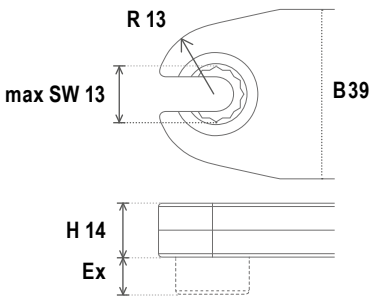
ZVGO331205		
max Torque	max Torque	15 Nm
Wirkungsgrad	Efficiency Factor	0,55

ZVGO331203		
max Torque	max Torque	15 Nm
Wirkungsgrad	Efficiency Factor	0,68

ZVGO331204		
max Torque	max Torque	15 Nm
Wirkungsgrad	Efficiency Factor	0,6
Drehrichtungsumkehr	Directional reversal	

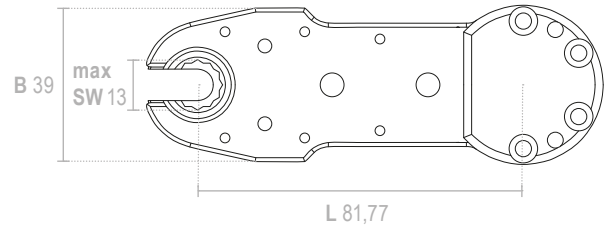


Zungenvorsatzgetriebe **offen**
 Baugröße **ZVGO3914**



max SW 13
 > kundenspezifisch
 > according customer
max Torque 23 Nm
R 13
B 39
H 14
I 1:1

Crowfoot **open**
 Size of frame **ZVGO3914**



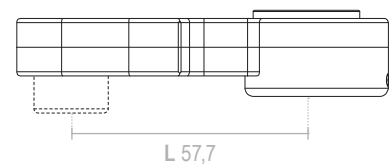
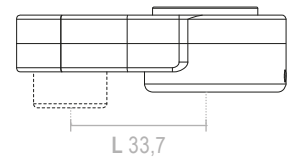
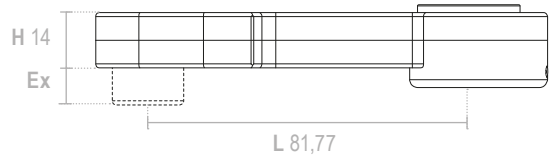
Bestellbeispiel Baugröße Version Abtrieb Überstand
 Ordering example Size of frame Version Output Extension

ZVGO3914 **05** **SW11** **Ex4**

ZVGO391405		
max Torque	max Torque	23 Nm
Wirkungsgrad	Efficiency Factor	0,55

ZVGO391403		
max Torque	max Torque	23 Nm
Wirkungsgrad	Efficiency Factor	0,68

ZVGO391404		
max Torque	max Torque	23 Nm
Wirkungsgrad	Efficiency Factor	0,6
Drehrichtungsumkehr	Directional reversal	

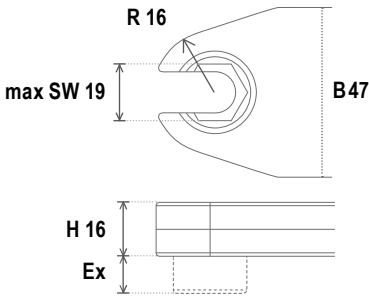


ZVG offen

Zungenvorsatzgetriebe

Crowfeet

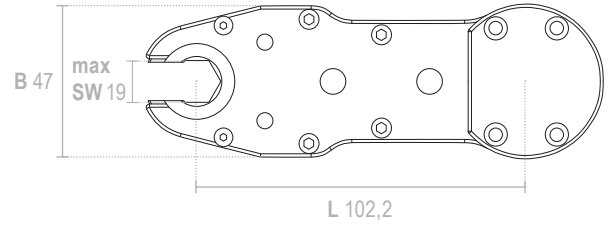
Zungenvorsatzgetriebe **offen**
 Baugröße **ZVGO4716**



max SW 19
 > kundenspezifisch
 > according customer

max Torque 45 Nm
R 16
B 47
H 16
I 1:1

Crowfoot **open**
 Size of frame **ZVGO4716**



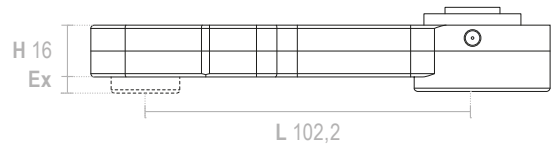
ZVG offen

Bestellbeispiel Baugröße Version Abtrieb Überstand
 Ordering example Size of frame Version Output Extension

ZVGO4716 **05** **SW17** **Ex8**

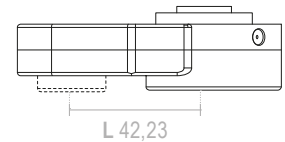
ZVGO471605

max Torque max Torque 45 Nm
Wirkungsgrad Efficiency Factor 0,55



ZVGO471603

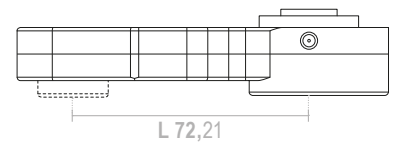
max Torque max Torque 45 Nm
Wirkungsgrad Efficiency Factor 0,68



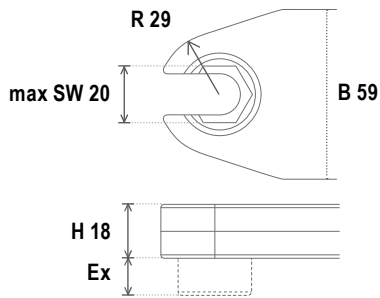
ZVGO471604

max Torque max Torque 45 Nm
Wirkungsgrad Efficiency Factor 0,6

Drehrichtungsumkehr Directional reversal ↻



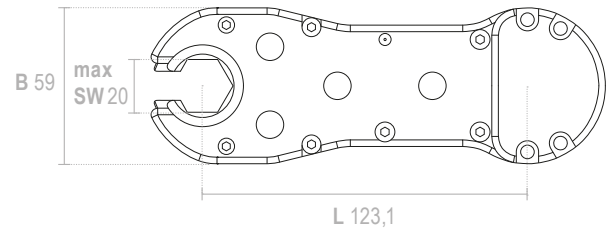
Zungenvorsatzgetriebe **offen**
 Baugröße **ZVGO5918**



max SW 20
 > kundenspezifisch
 > according customer

max Torque 60 Nm
R 29
B 59
H 18
I 1:1

Crowfoot **open**
 Size of frame **ZVGO5918**



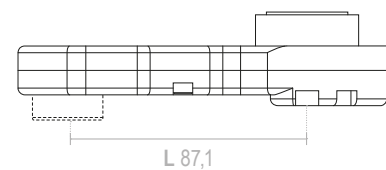
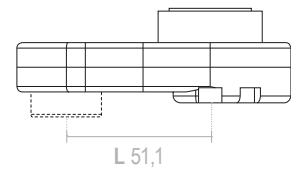
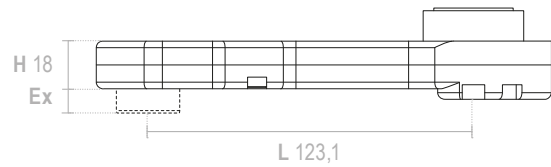
Bestellbeispiel Baugröße Version Abtrieb Überstand
 Ordering example Size of frame Version Output Extension

ZVGO5918 **05** **SW18** **Ex7**

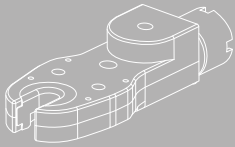
ZVGO591805		
max Torque	max Torque	60 Nm
Wirkungsgrad	Efficiency Factor	0,55

ZVGO591803		
max Torque	max Torque	60 Nm
Wirkungsgrad	Efficiency Factor	0,68

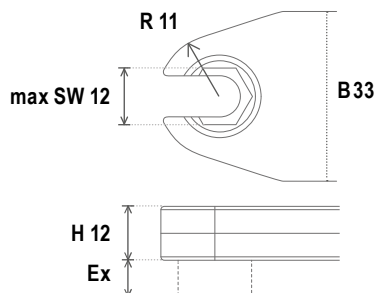
ZVGO591804		
max Torque	max Torque	60 Nm
Wirkungsgrad	Efficiency Factor	0,6
Drehrichtungsumkehr	Directional reversal	



ZV/G offen



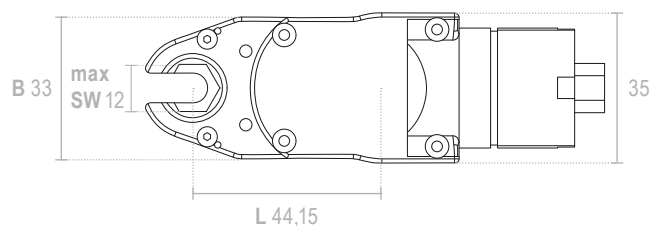
Zungenvorsatzgetriebe **offen inline** Baugröße **ZVGOI3312**



max SW 12
> kundenspezifisch
> according customer

max Torque 20 Nm
R 11
B 33
H 12
I 1,38:1

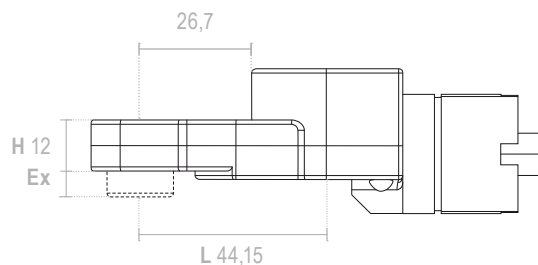
Crowfoot **open inline** Size of frame **ZVGOI3312**



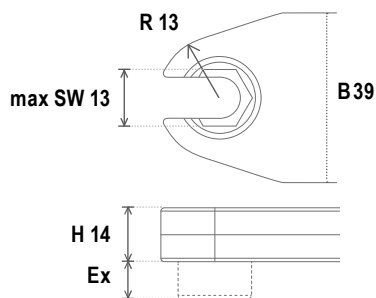
Bestellbeispiel Baugröße Version Abtrieb Überstand
Ordering example Size of frame Version Output Extension

ZVGOI3312 **05** **SW10** **Ex8**

ZVGOI331205		
max Torque	max Torque	20 Nm
Wirkungsgrad	Efficiency Factor	0,61



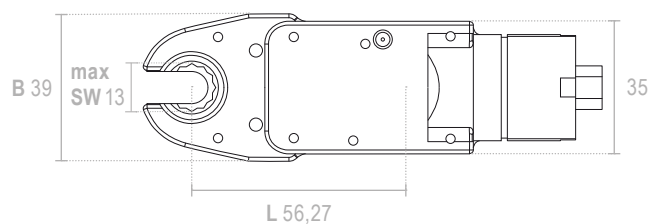
Zungenvorsatzgetriebe **offen inline** Baugröße **ZVGOI3914**



max SW 13
> kundenspezifisch
> according customer

max Torque 23 Nm
R 13
B 39
H 14
I 1,15:1

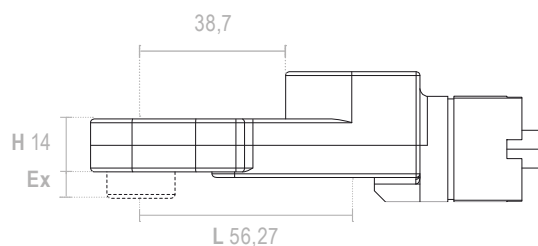
Crowfoot **open inline** Size of frame **ZVGOI3914**



Bestellbeispiel Baugröße Version Abtrieb Überstand
Ordering example Size of frame Version Output Extension

ZVGOI3914 **05** **SW11** **Ex8**

ZVGOI391405		
max Torque	max Torque	23 Nm
Wirkungsgrad	Efficiency Factor	0,61

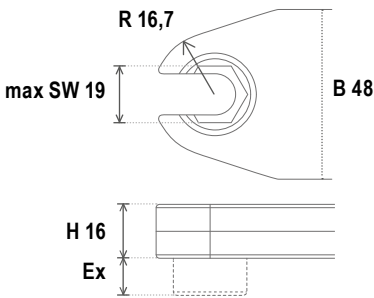


ZVG offen inline

Zungenvorsatzgetriebe

Crowfeet

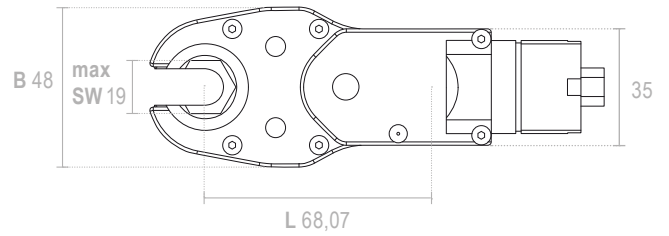
Zungenvorsatzgetriebe **offen inline**
Baugröße **ZVGOI4816**



max SW 19
> kundenspezifisch
> according customer

max Torque 30 Nm
R 16,7
B 48
H 16
I 1,9:1

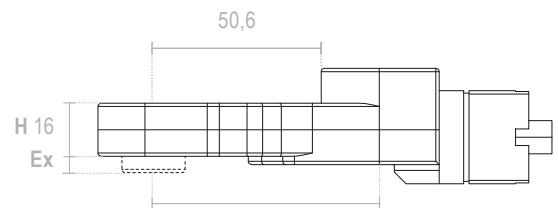
Crowfoot **open inline**
Size of frame **ZVGOI4816**



Bestellbeispiel Baugröße Version Abtrieb Überstand
Ordering example Size of frame Version Output Extension

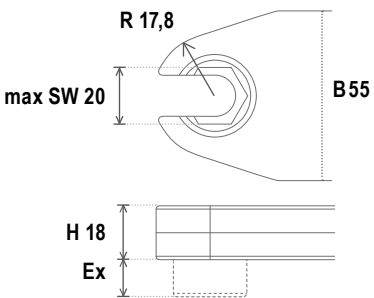
ZVGOI4816 **05** **SW17** **Ex3**

ZVGO481605		
max Torque	max Torque	30 Nm
Wirkungsgrad	Efficiency Factor	0,61



ZVG offen inline

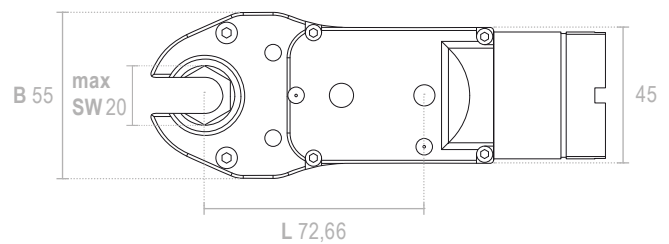
Zungenvorsatzgetriebe **offen inline**
Baugröße **ZVGOI5518**



max SW 20
> kundenspezifisch
> according customer

max Torque 60 Nm
R 17,8
B 55
H 18
I 1,8:1

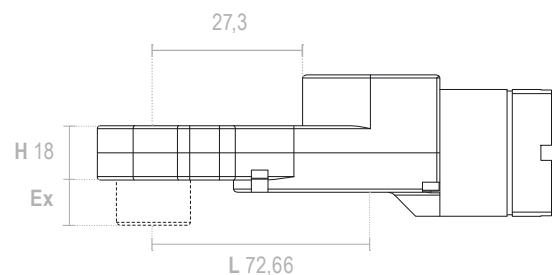
Crowfoot **open inline**
Size of frame **ZVGOI5518**



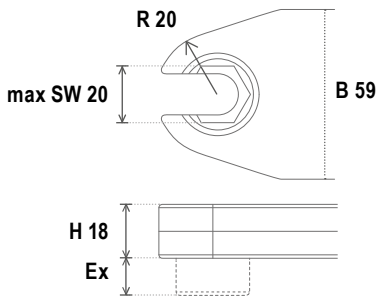
Bestellbeispiel Baugröße Version Abtrieb Überstand
Ordering example Size of frame Version Output Extension

ZVGOI5518 **05** **SW18** **Ex8**

ZVGOI551805		
max Torque	max Torque	60 Nm
Wirkungsgrad	Efficiency Factor	0,61



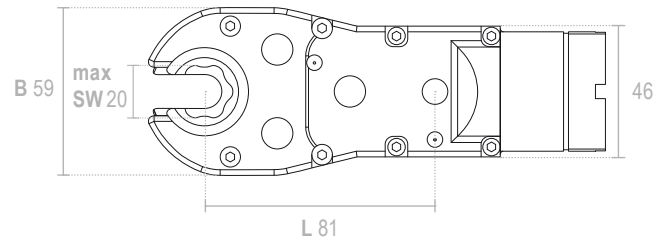
Zungenvorsatzgetriebe **offen inline** Baugröße **ZVGOI5918**



max SW 20
> kundenspezifisch
> according customer

max Torque 65 Nm
R 20
B 59
H 18
I 2,17:1

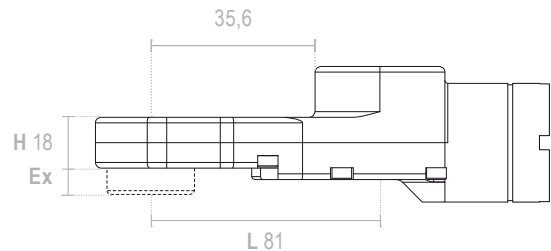
Crowfoot **open inline** Size of frame **ZVGOI5918**



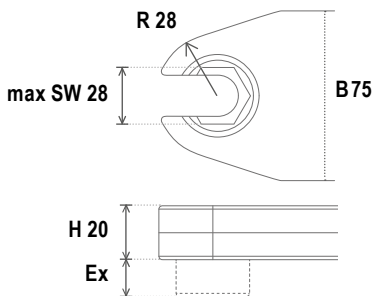
Bestellbeispiel Baugröße Version Abtrieb Überstand
Ordering example Size of frame Version Output Extension

ZVGOI5918 **05** **SW18** **Ex7**

ZVGOI591805		
max Torque	max Torque	65 Nm
Wirkungsgrad	Efficiency Factor	0,61



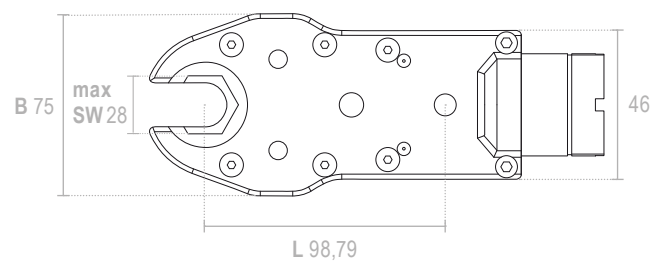
Zungenvorsatzgetriebe **offen inline** Baugröße **ZVGOI7520**



max SW 28
> kundenspezifisch
> according customer

max Torque 60 Nm
R 28
B 75
H 20
I 2:1

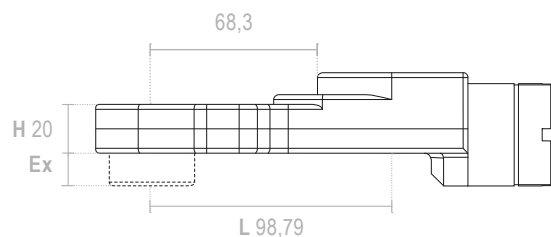
Crowfoot **open inline** Size of frame **ZVGOI7520**



Bestellbeispiel Baugröße Version Abtrieb Überstand
Ordering example Size of frame Version Output Extension

ZVGOI7520 **05** **SW26** **Ex8**

ZVGOI752005		
max Torque	max Torque	60 Nm
Wirkungsgrad	Efficiency Factor	0,61



Wir optimieren Montageprozesse

Technical drawing showing dimensions G, SW, B, D, F, H, Ex, A, L.

Datenblatt ekatec Zungenvorsatzgetriebe

Specification ekatec Crowfeet

Date _____

Name _____

N° _____

Direction 1 open

Direction 2 closed

in mm

A _____

B _____

D _____

F _____

G _____

H _____

L _____

Gear ratio _____

Efficiency _____

SW _____

Ex _____

Direction 2

Direction 1

in mm

Principal Dimension X _____

Main Dimension Y _____

Z _____

Tool _____

Attach spez. _____

Nominal Torque Nm _____

Maximum Torque Nm _____

ekatec GmbH
Römerstraße 30
D-72108 Rottenburg-Weiler

Telefon +49 (0) 7472 93790-0
Telefax +49 (0) 7472 93790-29
info@ekatec-gmbh.de

www.ekatec-gmbh.de
www.covertec-werkzeuge.de

Optimiert Montageprozesse

Sollten Sie nichts passendes finden oder benötigen Sie eine andere Größe oder Ausführung – rufen Sie uns an.

Die Maßangaben in diesem Katalog sind unverbindlich. Technische Änderungen vorbehalten.

If you are unable to find anything suitable or need a different size or version – then give us a call.

The measures in this catalog are not binding. Reserve technical changes.